


Use of Biphasic Ca Phosphates in GBR

Elias Mouannes, DDS
CSO, Chief strategy officer
MEDIBREX



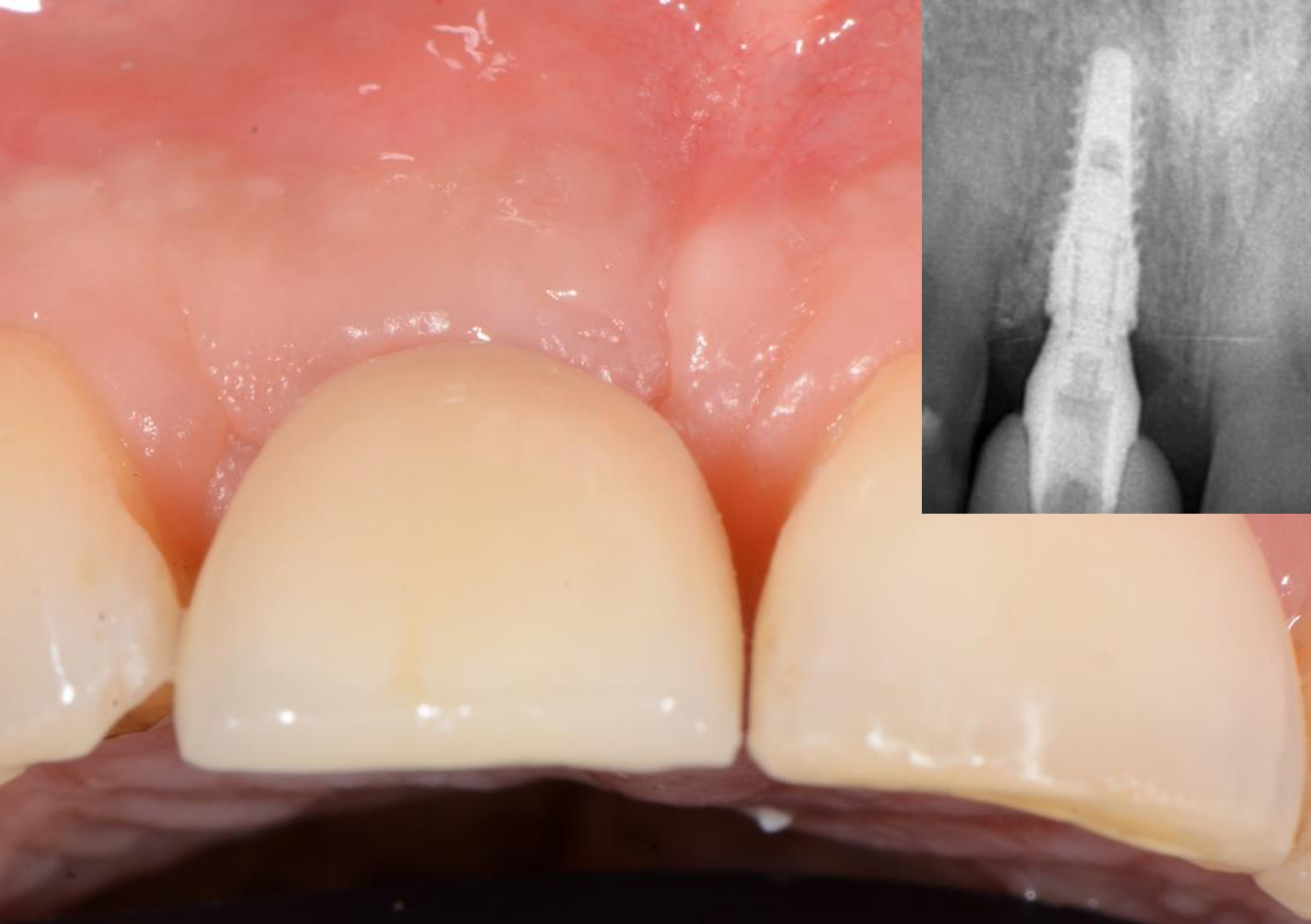
Association
of Dental
Implantology

An intraoperative photograph showing a surgical site. A large, dark, irregularly shaped area, likely a bone defect or a membrane, is visible in the center. The surrounding tissue is reddish and vascularized. A white, circular object, possibly a surgical instrument or a marker, is visible in the top left corner. The text "Guided Bone Regeneration" is overlaid in blue.

Guided Bone Regeneration

But is it really Bone?

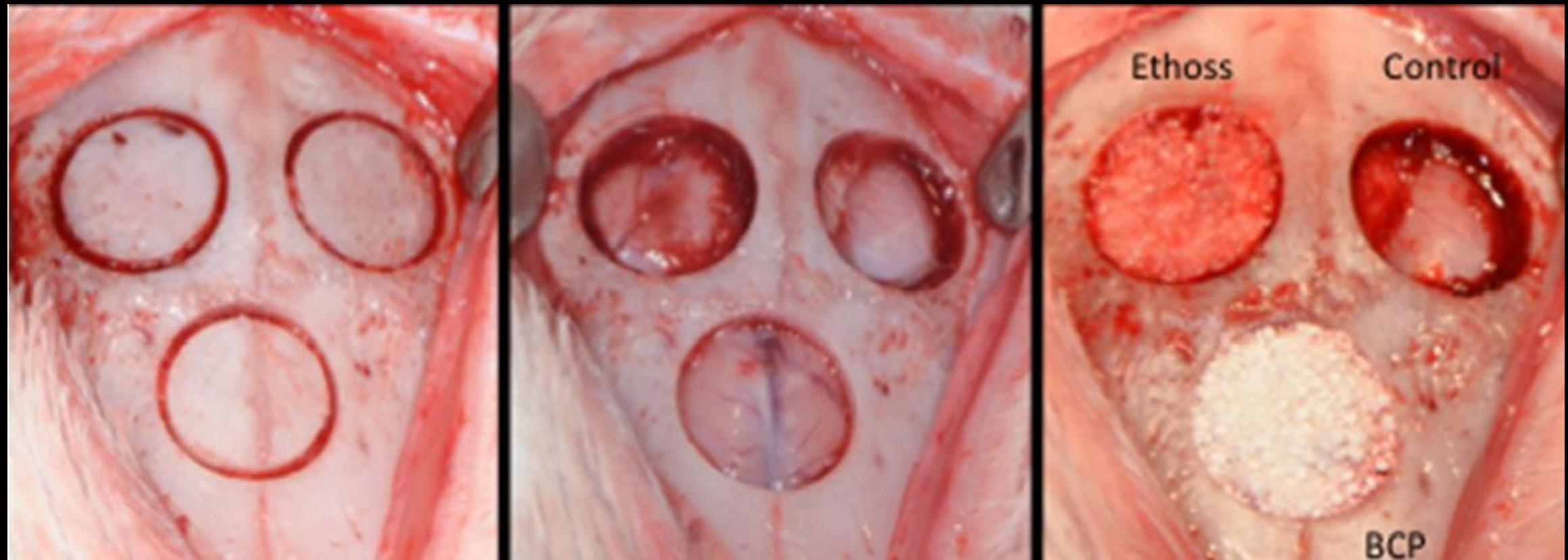
TRUE HOST BONE !



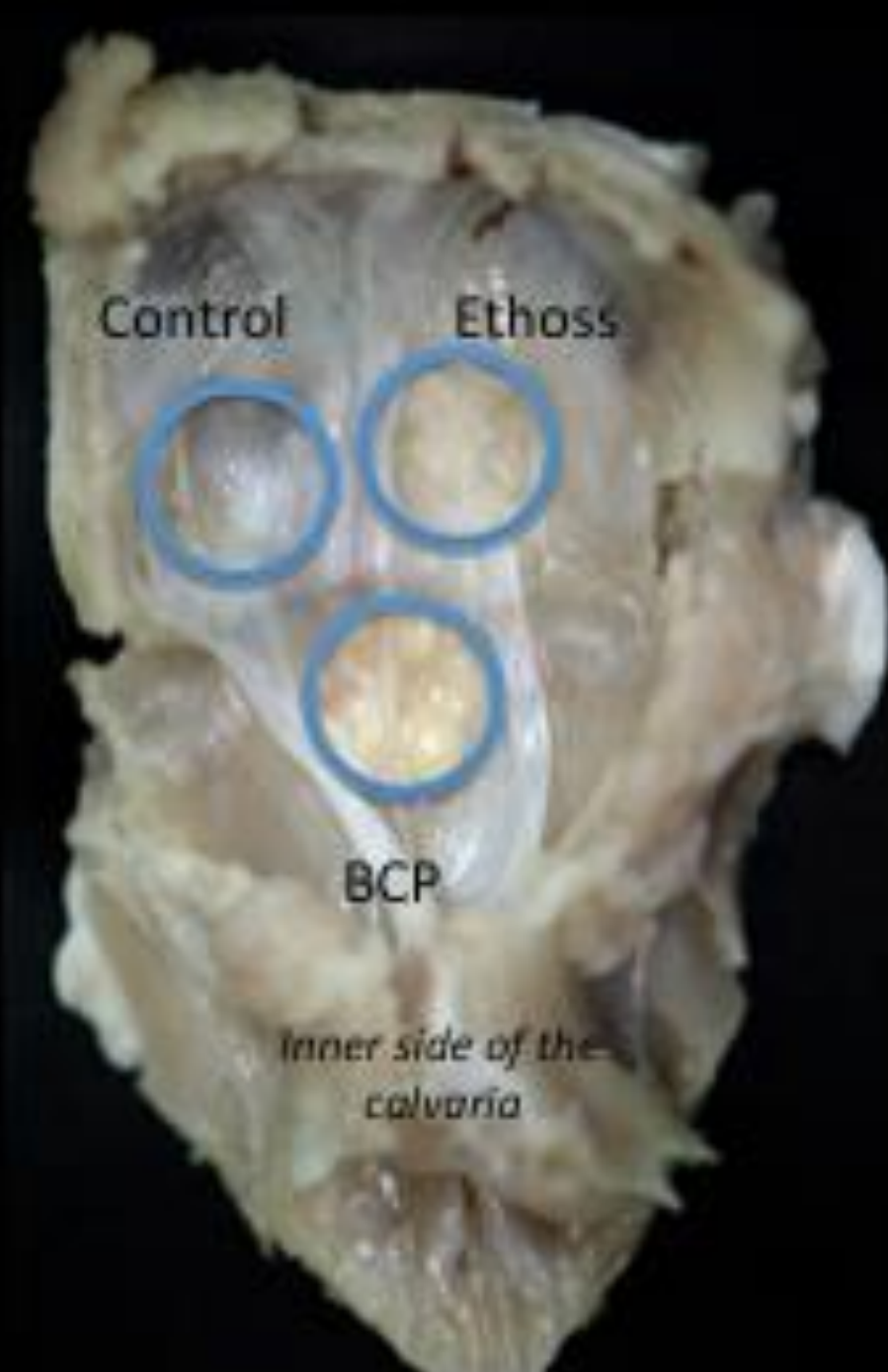


2 Years Loaded

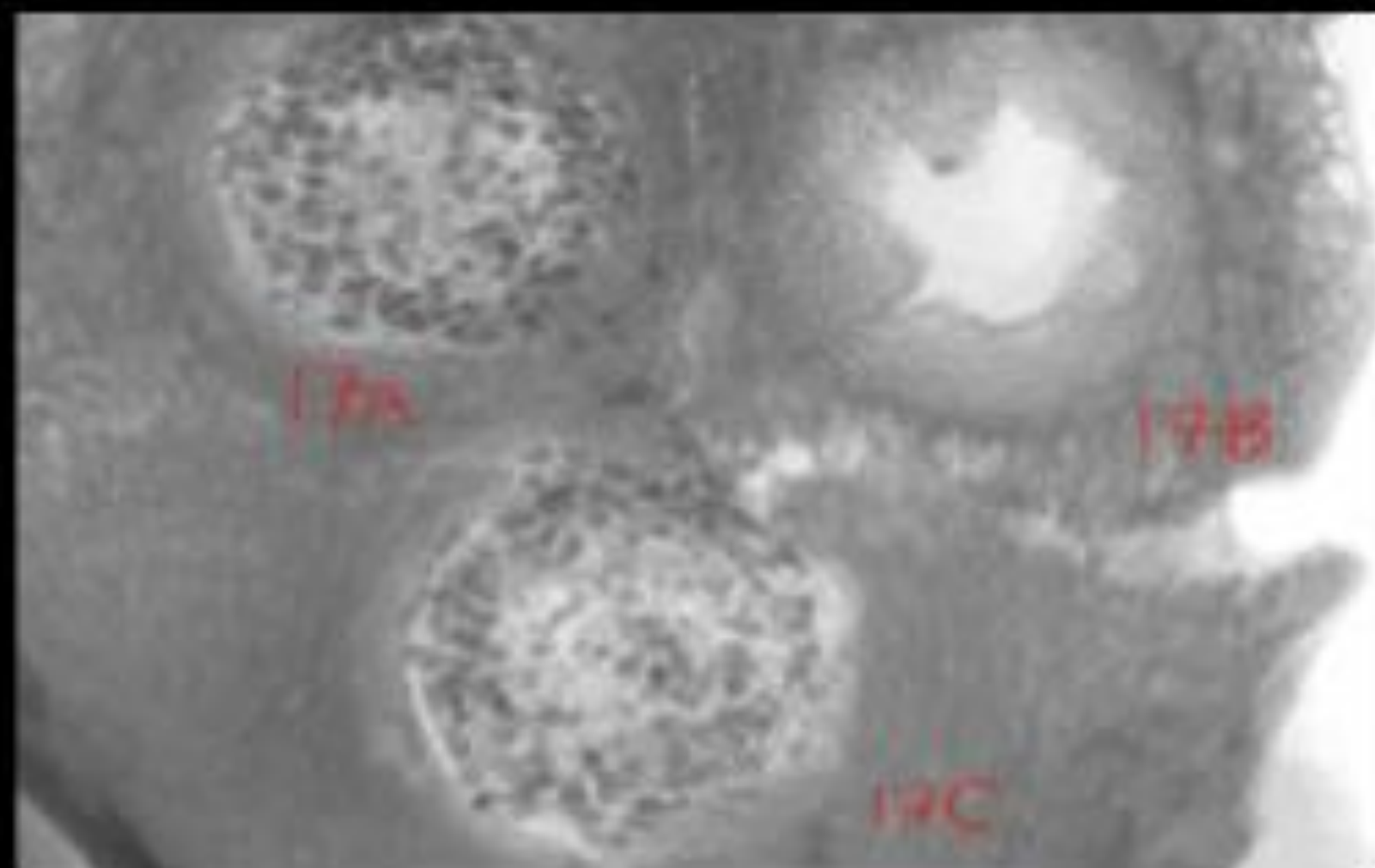




Comparison study with Teebone BCP

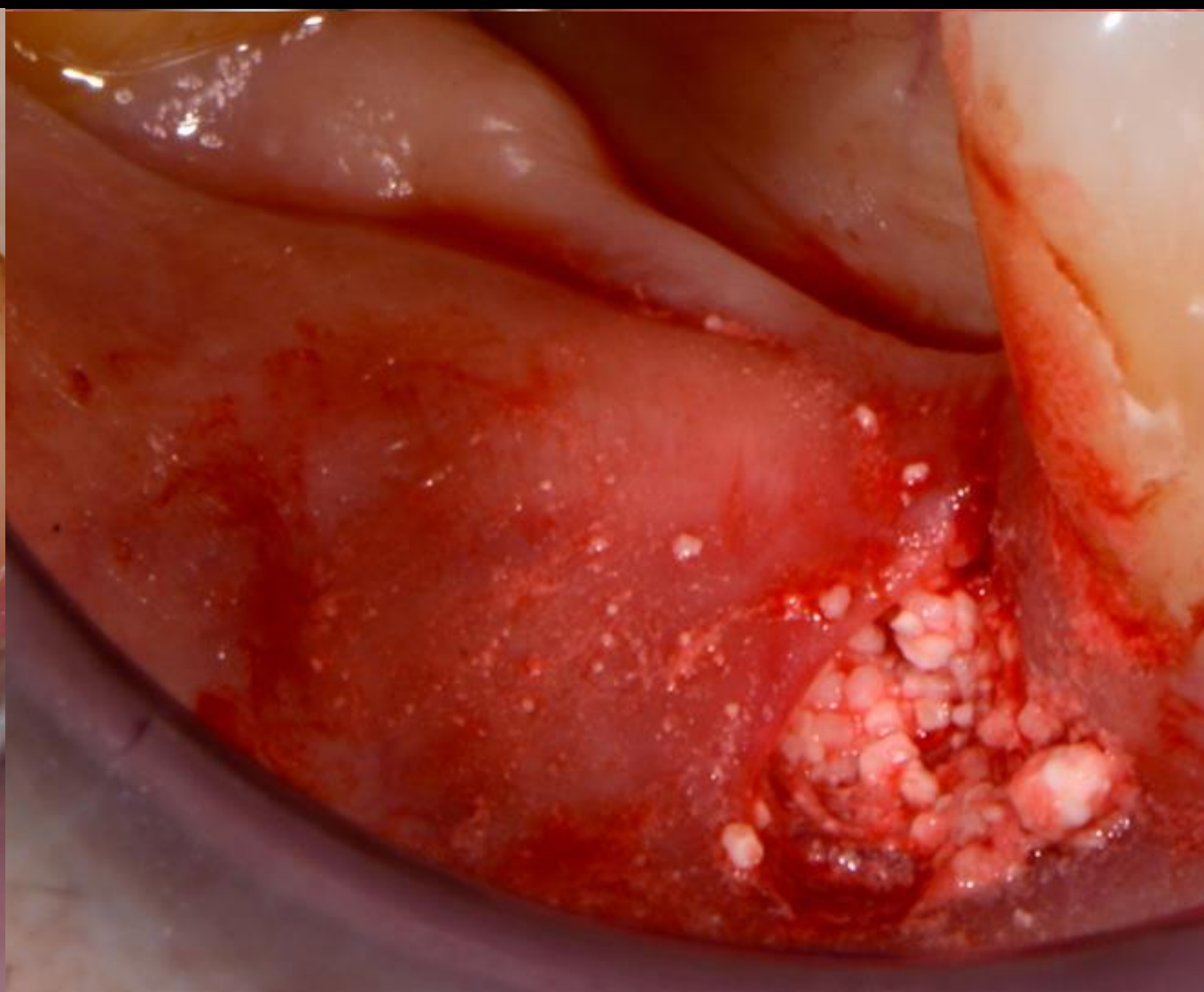


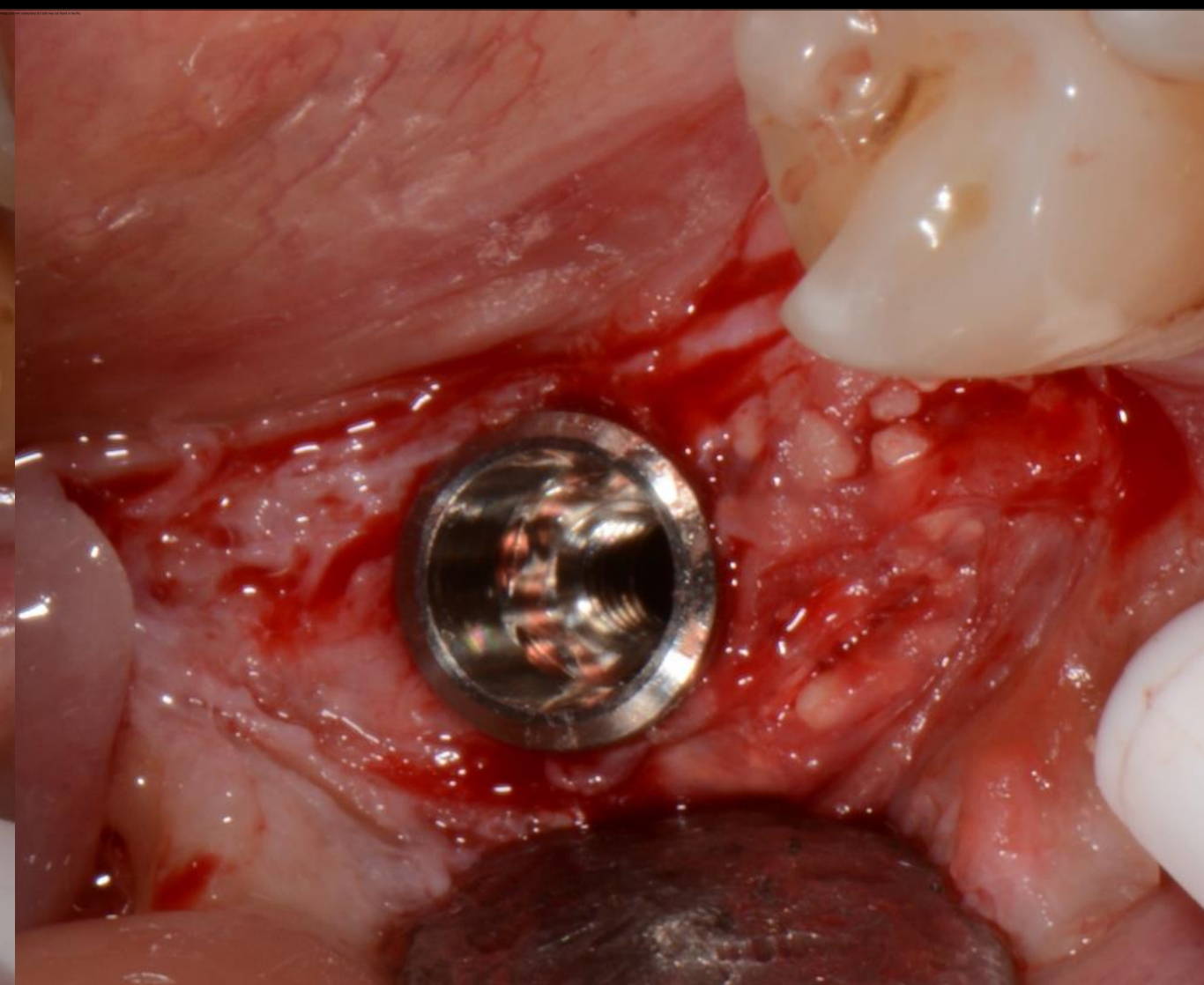
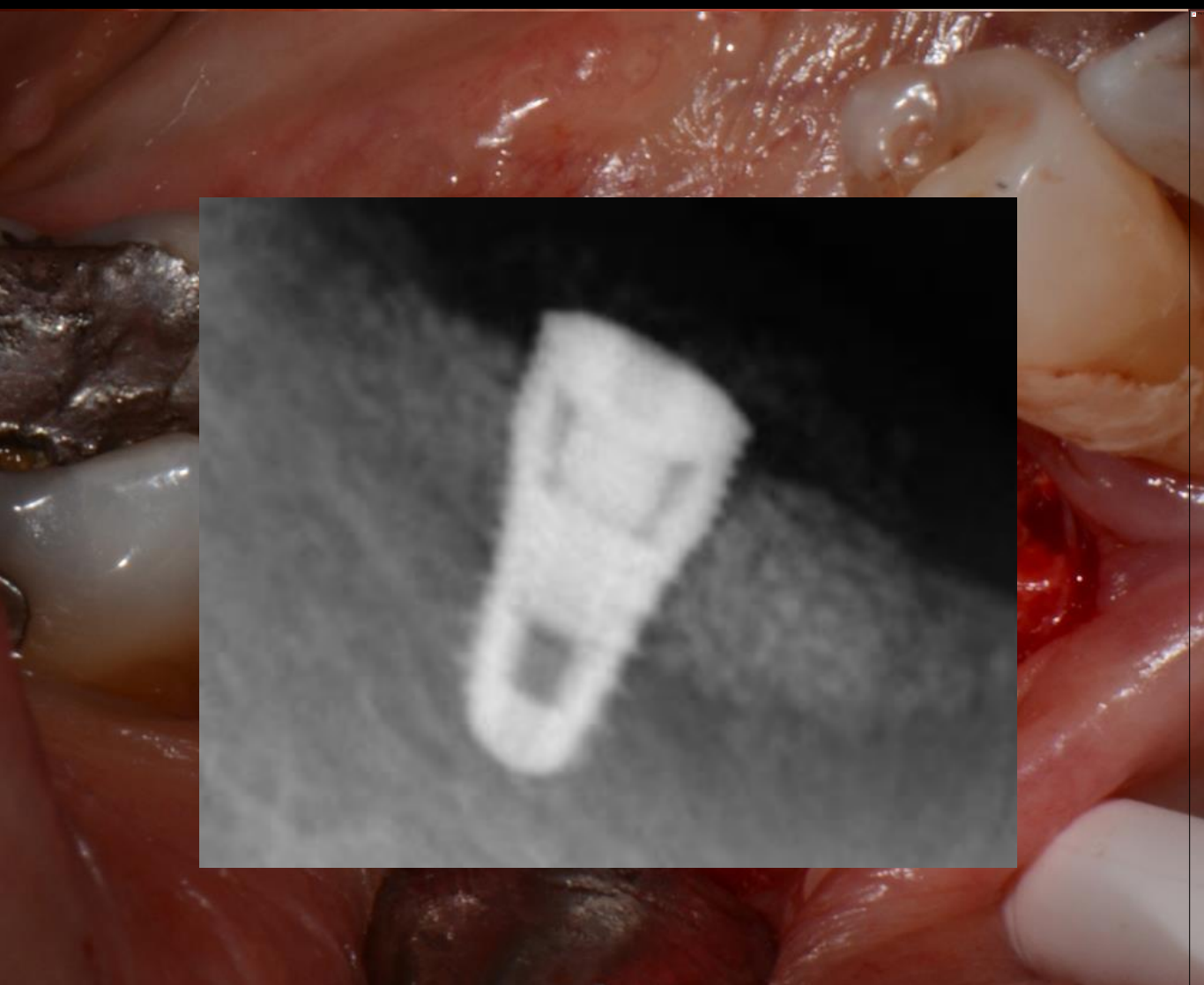
Micro CT of the Calvaria



Tunnel Graft Case SM







7 years Loaded

